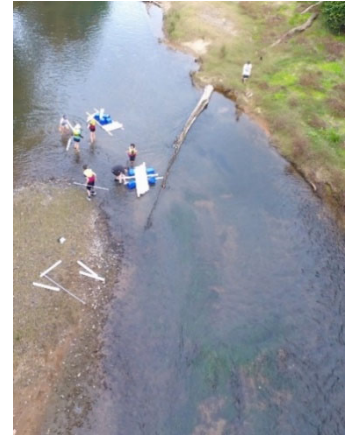


MIMBURI CAMPUS ACTIVITIES

Mimburi Campus offers a range of engaging and fun activities for visiting staff and students. Our Mimburi Team will help visiting staff to create a program for your visit that meets your educational needs. Please discuss with them at your time of booking as some activities may not be available due to weather conditions.


Activities at Mimburi fall into two categories – those that must be led by a qualified Mimburi Staff member and those that can be led by visiting staff members.

In the development of your Mimburi Program visiting staff must take staffing requirements into consideration as additional Mimburi staff required to support your program will incur extra costs.



<p>Damper and Billy Tea upon arrival</p>		<p>Mimburi staff do a great damper in our camp ovens – and combined with billy tea, makes a great introduction morning tea soon after arrival, for your time spent at Mimburi.</p> <p>(dependent on fire ban status)</p>
<p>Team Building Games</p>		<p>Talk to us about the range of equipment we have that could support you running your own Team Building Activities – or bring your own equipment and use the ample space on offer to run your own</p>
<p>Advanced GIT's (Group Initiative Tasks) (1.5 - 2.5 hours per Session)</p>		<p>Includes all equipment and one Mimburi Staff Leader for groups up to 30.</p> <p>Test the communication, leadership, persistence and more of your group, with more challenging tasks lead by staff experienced in running and debriefing these activities targeting your desired learning outcomes.</p>

<p>Raft Building</p> <p>(1.5 – 2.5 hour session)</p>		<p>Includes all equipment, PFDs etc and one Mimburi Staff Leader for groups up to 30.</p> <p>Working as teams, compete against each other and mother nature to build a strong and stable raft to test in the Mary River</p>
<p>Mountain Biking</p> <p>(1.5 – 2.5 hour session)</p>		<p>Includes Bikes, Helmets etc and one Mimburi Staff Leader for groups up to 30.</p> <p>Mountain biking is “so hot right now” and Mimburi is busy building and adding to our own private trail network. Have a session with Andrew, our own MTB Coach and qualified MTB Guide to learn some new skills and shred the trails.</p>
<p>Archery</p> <p>(1.5 – 2.5 hour session)</p>		<p>Includes all equipment and one Mimburi Staff Leader for groups up to 30.</p> <p>Archery requires respect, persistence and a sense of calm ... and is great fun! Sessions are run under cover in our purpose built archery range attached to the Bunya Valley Camp.</p>
<p>Orienteering</p> <p>(1.5 – 2.5 hour Session)</p>		<p>Includes use of our official Orienteering Queensland Maps, compass’ and access to snake bite kits if required.</p> <p>Mimburi Staff to Lead (Can be led by competent/qualified group staff by negotiation)</p>
<p>Survival Skills</p> <p>(1.5 – 2.5 hr session)</p>		<p>Mimburi staff can take your group though some basic survival skills as you explore some of the more out of the way areas of our Mimburi property.</p>

<p>Hiker's Camp Outs</p>		<p>Includes Backpacks, Hiking Tents, Sleeping Mat, Trangias/Fuel Stoves, Cooking Utensils, Base Camp Equipment and Mimburi Staff Leader, experienced in minimal impact expeditions, to run a preparation session and get the group under way. You will also have radio communication with Mimburi staff should issues/emergencies arise throughout. Activity runs overnight completely on site.</p>
<p>Curriculum-based Activities</p> <ul style="list-style-type: none"> • HASS • Science • Art • Agriculture 		<p>Schools to discuss requirements directly with Mimburi Staff. We can share our knowledge of indigenous culture and history, sustainable agriculture and land usage practices, riparian zone regeneration projects conducted on site, and more.</p>
<p>FREE Activities</p> <ul style="list-style-type: none"> • Swimming in the Mary River • Night Reflector Walk (coming in 2020) • Nature Walks • Movie Night on our Data Projector (provide your own HDMI compatible computer and movie) 		<p>These activities can be run by competent/qualified visiting staff. All risk management processes and supervision requirements are the responsibility of the visiting group – however access to our portable “snake bite kits” and closed channel UHF radio’s may be available – please discuss with us while planning your visit.</p>
<p>We love new ideas and challenges - Please discuss other ideas that have been inspired by our beautiful location with our team.</p>		